

Flexural Behavior of RC Beams Strengthened with Carbon Fiber Reinforced Polymer (CFRP) Fabrics

R. Balamuralikrishnan^{1,*} and C. Antony Jeyasehar²

¹Senior Lecturer, ²Professor and Head, Department of Civil and Structural Engineering, Annamalai University, Annamalainagar – 608 002, Tamilnadu, India

Abstract: This paper explores the flexural behavior of carbon fiber reinforced polymer (CFRP) strengthened reinforced concrete (RC) beams. For flexural strengthening of RC beams, total ten beams were cast and tested over an effective span of 3000 mm up to failure under monotonic and cyclic loads. The beams were designed as under-reinforced concrete beams. Eight beams were strengthened with bonded CFRP fabric in single layer and two layers which are parallel to beam axis at the bottom under virgin condition and tested until failure; the remaining two beams were used as control specimens. Static and cyclic responses of all the beams were evaluated in terms of strength, stiffness, ductility ratio, energy absorption capacity factor, compositeness between CFRP fabric and concrete, and the associated failure modes. The theoretical moment-curvature relationship and the load-displacement response of the strengthened beams and control beams were predicted by using FEA software ANSYS. Comparison has been made between the numerical (ANSYS) and the experimental results. The results show that the strengthened beams exhibit increased flexural strength, enhanced flexural stiffness, and composite action until failure.

Keywords: Composite beams, CFRP Fabric, Flexural Strengthening, Numerical (ANSYS), Reinforced Concrete.

1. INTRODUCTION

In recent years repair and retrofit of existing structures such as buildings, bridges, etc., have been amongst the most important challenges in Civil Engineering. The primary reason for strengthening of structures includes upgrading of its resistance to withstand underestimated loads, increase in the load carrying capacity for higher permit loads, such as due to increased perceived risk from seismic excitations, eliminating premature failure due to inadequate detailing, restoration of lost load carrying capacity due to corrosion or other types of degradation caused by aging, etc. The use of carbon fiber reinforced polymer (CFRP) in strengthening reinforced concrete (RC) structures has become an increasingly popular retrofit technique. The technique of strengthening reinforced concrete structures by externally bonded CFRP fabric was started in 1980s and has since attracted researchers around the world [1].

Strengthening with externally bonded CFRP fabric has shown to be applicable to many kinds of structures. Currently, this method has been applied to strengthen such structures as column, beams, walls, slabs, etc. The use of external CFRP reinforcement may be classified as flexural strengthening, improving the ductility of compression members, and shear strengthening. It is well known that reinforced concrete beams strengthened with externally bonded fiber-reinforced polymer (FRP) or CFRP to the tension face can exhibit ultimate flexural strength greater

than their original flexural strength. However, these FRP and CFRP strengthened beams could lose some of their ductility due to the brittleness of FRP and CFRP plates. Reinforced concrete beams were strengthened with Glass Fiber-Reinforced Polymers (GFRP) or FRP plates [2, 3]. They concluded that the flexural strength of reinforced concrete beams could be significantly increased by externally bonded GFRP or FRP plated to their tension surface. However, they indicted in their experimental research that the ductility of reinforced concrete beams using externally bonded GFRP or FRP was reduced, and the extent of reduction in ductility was dependent upon the original beams.

A relatively new technique involves replacement of the steel plates by fiber-reinforced polymers (FRP) in the form of fabric or wraps [4-8]. FRP offers the engineers an outstanding combination of properties such as low weight, easier site handling, immunity from corrosion, excellent mechanical strength and stiffness, and the ability of formation in long lengths, thus eliminating the need for lap joints. Further, there has been a rapid progress in concrete technology that has resulted in the evolution of concretes having specified characteristics. The present study evaluates the performance of RCC beams with bonded CFRP fabric in single layer and two layers at the soffit of the beam under static and cyclic loading. CFRP fabric has shown great promise to upgrade structural systems. An emphasis has been given to the strength and deformation properties of CFRP fabric strengthened RC beams. The theoretical moment-curvature relationship and the load - displacement response of the strengthened beams and control beams were predicted by using FEA software ANSYS. Comparison is made between the numerical (ANSYS) and the experimental

*Address correspondence to this author at the Department of Civil and Structural Engineering, Annamalai University, Annamalainagar – 608 002, Tamilnadu, India; Tel: 91- 4144- 239732; E-mail: bmk_gaya@rediffmail.com

results and suitable conclusions are drawn based on the results obtained from laboratory experiments and numerical analysis.

2. EXPERIMENTAL INVESTIGATION

The test program consisted of casting and testing of ten beams, of which two were control beams, all having size of 150×250×3200 mm length and designed as the beams of under reinforced section [9], reinforced with 2-12 # at bottom, 2-10 # at top using 6mm dia stirrups @ 150 mm c/c (Fig. 1). The beams were cast using M 20 grade concrete and Fe 415 grade steel.

Ordinary Portland cement, natural river sand and the crushed granite of maximum size 20 mm were used. High yield strength deformed (HYSD) bars of 12 and 10 mm diameter with mean strength of 512 N/mm² were used as

longitudinal reinforcement and 6 mm diameter mild steel bars were used for internal links. The elastic modulus of the concrete is 2.4x10⁴ N/mm². After 28-day curing, companion cubes (150 mm) and cylinders (150 mm diameter x 300 mm height) cast along with the beams were tested in compression to determine the 28-day compressive strength and modulus of elasticity. In two series of strengthened beams, first series having four beams with bonded CFRP fabric in single layer which is parallel to beam axis of which two beams were subjected to static loading, and remaining two beams were subjected to compression cyclic loading. In second series having four beams with bonded CFRP fabric in two layers which are parallel to beam axis of which two beams were subjected to static loading and remaining two beams were subjected to compression cyclic loading under virgin condition and tested until failure. The details of test beams are presented in Table 1.

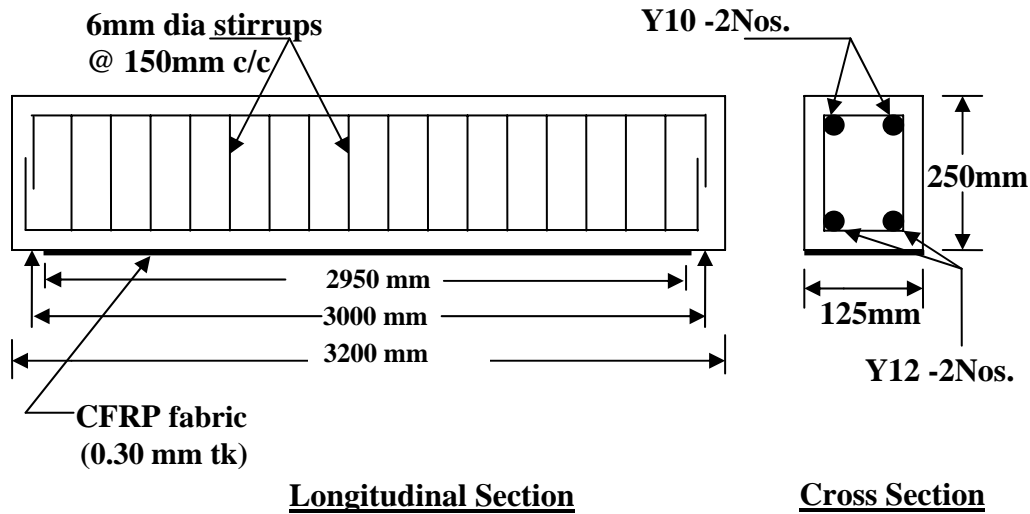


Fig. (1). Longitudinal and Cross Section of Strengthened Beam

Table 1. Beam Designation

Sl. No	Beam Number	Beam Type	Loading Set Up		CFRP Fabric Properties (0.30 mm Thickness , 200 g/m ² Weight of Fiber and E = 1.55×10 ⁵ N/mm ²)			
			Static Loading	Cyclic Loading (Compression Cyclic)	Fiber Orientation	Tensile Strength N/mm ²	Tensile Modulus N/mm ²	Ultimate Elongation in Percentage
1.	CB1	Control Beam	1 No.	-	-	-	-	-
2.	CB2	Control Beam	-	1 No.	-	-	-	-
3.	RB1	CFRP Strengthened beam (Single layer)	2 Nos.	-	Unidirectional (Parallel to beam axis)	3500	285×10 ³	1.50
4.	RB2	CFRP Strengthened beam (Single layer)	-	2Nos.	Unidirectional (Parallel to beam axis)	3500	285×10 ³	1.50
5.	RB3	CFRP Strengthened beam (Two layers)	2Nos.	-	Unidirectional (Parallel to beam axis)	3500	285×10 ³	1.50
6.	RB4	CFRP Strengthened beam (Two layers)	-	2Nos.	Unidirectional (Parallel to beam axis)	3500	285×10 ³	1.50

2.2. Summary of Test Results

The test results on the strength and deformation properties of the control specimens and strengthened beams are reported in Tables 2 and 3.

The quantitative measure of ductility has to be with reference to the load-deflection response. Then, the ratio of the ultimate deformation to the deformation at the beginning of the horizontal path (or, at first 'yield') can give a measure of ductility. However, each choice of deformation (strain, rotation, curvature, or deflection) may give a different value for the ductility measure [10].

Energy absorption capacity can be measured under the area of stress-strain curve (load-deflection curve). The first crack loads were obtained by visual examination only. The experimental ultimate loads were obtained corresponding to the load beyond which the beam would not sustain additional deformation at the same load intensity. Based on the experimental results, it can be observed that significant increase in strength can be realized at all the load levels by externally bonding CFRP fabric. This increase may be attributed to the increase in tensile cracking strength of concrete due to confinement. Further, it is to be noted that increase in load carrying capacity is possible only when other modes of failure do not interfere. All the strengthened beams were also carefully examined prior to and after testing. It was found that failure did not occur at the CFRP fabric-concrete interface.

This confirms that the composite action continued throughout the load spectrum.

The details presented in Tables 2 and 3 show that the beam RB3 and RB4 are performing well in all respects but RB4 exhibited slight decrease in all the properties due to the sustained load effect. The load-mid span deflection graphs were drawn for control and strengthened beams both in static and compression cyclic loading as shown in Figs. (6-10). From the graph it is observed that beam RB3 exhibited increased flexural strength and decreased deflection.

During the test, the crack patterns in the beams were noted and the crack patterns were closely analyzed. The crack patterns of the beams are shown in Fig. (11) and also the crack width of the control beams and strengthened beams are reported in Tables 2 and 3.

3. NUMERICAL (ANSYS) RESULTS OF LOAD-DEFLECTION BEHAVIOUR

FEA software ANSYS is adopted for predicting the load-displacement response of the control and strengthened beams numerically. The mesh model defined 375 nodes and 47 elements. The programme offers solid 65 for beam element (Fig. 12), link 8 for steel element (Fig. 13) and solid 45 for CFRP fabric element [11]. The generated model for beams are CB1, RB1 and RB3. The element discretization, loading pattern and boundary conditions in FEA model (ANSYS) for

Table 2. Summary of Test Results

Beam Code	First Crack Stage		Service Stage		Yield Stage		Ultimate Stage		Average Crack Width at Service Load (mm)
	Load (kN)	Central Deflection (mm)	Load (kN)	Central Deflection (mm)	Load (kN)	Central Deflection (mm)	Load (kN)	Central Deflection (mm)	
CB1	15	3.38	27.50	14.08	34.37	17.60	41.25	21.13	0.11
CB2	15	3.45	27.50	14.08	34.37	17.60	41.00	21.00	0.11
RB1	20.00	5.14	33.00	13.42	41.25	16.70	49.50	20.13	0.09
RB2	18.5	5.14	32.00	13.42	40.00	16.00	49.00	20.10	0.09
RB3	25.00	4.68	40.00	12.08	50.00	15.00	60.00	18.12	0.08
RB4	24.00	4.68	39.50	12.08	48.00	14.75	59.00	17.10	0.08

Table 3.

Beam Code	Ductility Factor	Energy Capacity Factor	Post Cracking-Pre yielding Stiffness (kNm ²)	Mode of Failure
CB1	1.18	1.20	935	Flexure
CB2	1.16	1.19	945	Flexure
RB1	1.25	1.75	1183	Flexure
RB2	1.30	1.80	1197	Flexure
RB3	1.38	2.00	1597	Flexure
RB4	1.42	2.00	1559	Flexure

7. CONCLUSIONS

Based on the results obtained from experiments, and theoretical analyses, the following conclusions are drawn:

1. **CFRP** fabric properly bonded to the tension face of RC beams can enhance the flexural strength substantially. The strengthened beams exhibit an increase in flexural strength of 18 to 20 percent for single layer and 40 to 45 percent for two layers both static and compression cyclic loading respectively.
2. At any given load level, the deflections are reduced significantly thereby increasing the stiffness for the strengthened beams. At ultimate load level of the control specimens, the strengthened beams exhibit a decrease of deflection up to 80 percent.
3. All the beams strengthened with **CFRP** fabric in single layer and two layers experience flexural failures. None of the beams exhibit premature brittle failure.
4. A flexible epoxy system will ensure that the bond line both in single layer and two layers **CFRP** strengthened beams does not break before failure and participate fully in the structural resistance of the strengthened beams.
5. In this investigation **CPRP** strengthened beam gives appreciable ductility when compared to control beam.
6. From the experimental results it is clear that minimum two layers of **CFRP** fabric should be bonded to get the desired results. The strengthened beams RB1(single layer) and RB3 (two layer), exhibit 20 percent and 45

percent increase in flexural strength when compared to the control specimen and has close agreement with the experimental and numerical (ANSYS) results.

REFERENCES

- [1] U. Meier, M. Deuring, H. Meier, and G. Schwegler, "Strengthening of structures with CFRP strips: research and applications in Switzerland", *Adv. Comp. Mat. Bridges Struct. Can. Soc. Civil Eng.*, Montreal and Canada., vol. 1, June 1992, pp. 243-251.
- [2] H.Saadatmanesh, and M.R. Ehasani, "RC beams strengthened with FRP plates-experimental study", *ASCE J. Struct. Eng.*, vol. 117, no. 11, pp. 3417-3433, Nov 1997.
- [3] M. Arduini, A. Di Tommaso, and A. Nanni, "Brittle failure in FRP plate and sheet bonded beams", *ACI Struct. J.*, vol. 94, no. 4, pp. 363-370, July-Aug 1997.
- [4] U. Meier. *Bridge Repair with high performance Composite Materials*, Ricerca Italiana: Material and Technic, 1987.
- [5] T.C. Triantafillou, "Shear strengthening of reinforced concrete beams using epoxy bonded FRP composites", *ACI Struct. J.*, vol. 95, no. 2, pp.107-115, Mar-April 1998.
- [6] A.M. Malek, and H. Saadatmanesh, "Ultimate shear capacity of reinforced concrete beams strengthened with web-bonded fiber reinforced plastic plates", *ACI Struct. J.*, vol. 95, no. 4, pp. 391-399, Nov 1998.
- [7] T. Norris, H. Saadatmanesh, and M.R. Ehsani, "Shear and flexure strengthening of RC beams with carbon fiber sheets", *ASCE J. Struct. Eng.*, vol. 123, no. 7, pp. 903- 911, Dec 1996.
- [8] T. Tang, and H. Saadatmanesh, "Retrofit of concrete beams strengthened with FRP laminates against impact", *CONMAT*, vol. 1, pp. 84-94, Aug 2003.
- [9] IS 456, *Code of practice for reinforced concrete design*, New Delhi: Bureau of Indian Standards, 2000.
- [10] U. Pillai, and D. Menon, *Reinforced concrete design*, New Delhi: McGraw-Hill Publishing Co Ltd., 2002.
- [11] User Manual, ANSYS 8, USA: Ansys. Inc. Houston, 2006.

Received: February 2, 2008

Revised: June 22, 2009

Accepted: June 22, 2009

© Balamuralikrishnan and Jeyasehar; Licensee *Bentham Open*.

This is an open access article licensed under the terms of the Creative Commons Attribution Non-Commercial License (<http://creativecommons.org/licenses/by-nc/3.0/>) which permits unrestricted, non-commercial use, distribution and reproduction in any medium, provided the work is properly cited.