

enforcement actions that can predict driver behavior and future crash involvement [21]. The results indicated that reckless driving and improper turn violations are the violations that have the highest increase in likelihood of a future crash. Also, failure to keep proper lane was some of the convictions with the highest likelihood of a future crash. A study by Terrill *et al.* (2016) investigated the impact of traffic citations on the number of crashes on an interstate in Wyoming [22]. The results indicated that an increased number of citations issued is a preventive measure for the number of crashes.

However, none of the aforementioned studies used violation or conviction data to investigate groups of truck drivers with an increased risk of being involved in truck crashes. On the basis of the discussed studies, violations can be used as an indication of the groups that are at greater risk of being involved in future crashes.

This current study was set forward to fulfill two main objectives:

1. Conduct crash analysis to determine the factors impacting injury single truck and multiple vehicle, truck involved, crashes. In order to determine these factors, two analyses were carried out:
 - 1.1 Injury/fatal single truck crash analysis.
 - 1.2 Injury/fatal multiple vehicle crash analysis with involvement of at least one truck.
2. Conduct violations analysis to identify the groups who are more likely to violate the laws that are the main causes of single and multiple truck crashes. Two analyses were carried out to fulfill this objective:
 - 2.1 Analysis of those types of violations associated with single truck crashes.
 - 2.2 Analysis of those types of violations associated with multiple vehicle crashes involving at least one truck.

A crash in this study is one that results in an injury or fatality. Due to the low number of fatality crashes, these crashes were aggregated with injury crashes.

3. METHODS

Logistic regression is used in many studies involving binary crash outcomes [23 - 27]. For the logistic regression model, the binary response variable Y is assumed to have a Bernoulli distribution with probability [28].

$$\log \frac{\pi}{1-\pi} = \underline{x}' \underline{\beta} \quad (1)$$

where x is a vector of explanatory variables and $\underline{\beta}$ is a vector of unknown regression coefficients. Equation (1) can be solved for which gives

$$\pi = P(Y = 1) = \frac{\exp(\underline{x}' \underline{\beta})}{1 + \exp(\underline{x}' \underline{\beta})} \quad (2)$$

For modeling truck crash severity, the binary response variable was 1 for injury/fatal and 0 for a property damage only (PDO) truck involved crashes. The response is conditioned on a crash that has occurred, and then looking at its binary classification (fatal/injury (F+I) or PDO). Separate models were developed for single truck crashes and for multiple vehicle, truck involved, crashes. The probability (π) of either a single or multiple truck crash being injury was modeled using various risk factors as explanatory variables (\underline{x}).

Logistic regression was also used for analyzing violations. The purpose of these analyses was to identify drivers who are more at risk of committing particular traffic law violations, which can lead to truck involved crashes. Here, the response (Y) had the value 1 if a driver received a citation of a particular type and a 0 if a driver did not receive a citation of a particular type. The response is conditioned on drivers who had received a violation and then looking at its binary classification for the citation type (received or did not receive citation of particular type). Two different citation analyses were considered. The first analysis involved only those violations more commonly observed with single-truck crashes. The second analysis involved those violations most commonly observed in multiple-vehicle crashes involving at least one truck. The probability (π) of a driver receiving a citation of a particular type was examined in relation to the explanatory variables (\underline{x}) involving driver characteristics such as gender and residency, and temporal characteristics such as time of day and day of the week.

Stepwise model selection was used to select explanatory variables for a final logistic regression model. A

significance level of 0.10 was pre-specified for entering the model and a significance level of 0.05 was pre-specified for staying in the model. All analyses were performed using the Statistical Analysis System (SAS) [29].

4. DATA PREPARATION

The data was combined from the three interstates in Wyoming, I-80, I-25, and I-90, with the highest truck related crash rates. Crash data was obtained from the Wyoming Department of Transportation (WYDOT) using the Critical Analysis Reporting Environment (CARE) from 2011 to 2014. This study used various variables, which can be categorized under driver, environmental, vehicle, temporal, crash, and driver behaviors. Driver characteristics included age, gender, residency, violation (conviction) record, and speed limit compliance at the time of crash. Environmental characteristics included weather and roadway-surface conditions. Weight of a truck was categorized as a vehicle characteristic. Day of week and time of crash were organized under temporal characteristics. Roadway characteristics included posted speed limit of a location where a crash occurred. Driver actions at the time of crash, number of vehicles, and pre-collision vehicle action were categorized under crash characteristics. Driver distraction, driver under influence (DUI) suspicion, fatigue, and the use of safety technology were categorized under driver behaviors. In this study, distraction is defined as any type of distraction such as TV, cell pager, or wireless communication inside the cabin at the time of crashes. Truck crash analyses were divided into two parts: Single truck and multiple vehicles, truck involved, crashes. Single truck crashes were investigated separately as more than 50% of all the truck crashes were single truck crashes.

The violation data was obtained from the Wyoming court reported violation database from 2011 to 2014. For single truck crash analysis, truck drivers were at fault in the crashes. Therefore, the violation data for this analysis was filtered to include just truck driver violations to identify groups that are more at risk of single truck crashes. There were 121,680 violations filtered to 17,239 truck violations. However, all violations were used for investigating the groups that were at higher risk of multiple vehicles crashes, involving at least one truck. This is due to the fact that both truck and no truck drivers could be at fault in these crashes. Only violation types: follow too closely, failure to drive within single lane, and speed too fast for conditions that resulted in truck crashes were included in this study (Table 1). Violations related to the main causes of truck crashes were identified among 800 types of violations and presented in Table 1. For instance, only one violation type: driving too fast for conditions was identified as a contributing factor to a crash type: “drove too fast for conditions”.

Table 1. Driver Actions and related Violations, truck involved crashes.

Driver Actions, Truck Crashes	Number of Identified Violation	Driver Actions, Related Violation
Failed to keep Proper Lane	1	Fail to drive within single lane
Drove too fast for conditions	1	Speed too fast for condition
Followed too close	1	Follow too closely

5. RESULTS

5.1. Descriptive Analysis, Crash Data

Fig. (1) presents general characteristics of truck crashes on Wyoming interstates. As can be seen from Fig. (1a), most of the truck crashes (52%) involved just a single truck. Including both single (52%) and multiple vehicle, truck involved crashes (26%), about 78% of the truck drivers were at fault for truck crashes on Wyoming interstates. Driver actions with highest percentage, for both single and multiple truck related crashes, are included in Figs. (1b and c). As can be seen from Figs. (1b and c), the main causes of truck crashes, driver actions, include failing to keep proper lane, driving too fast for conditions, and following too close. Based on Figs. (1b and c), no improper driving, failure to keep proper lane, following too close account for 78% of multiple vehicle, truck involved, crashes and 65% of single truck crashes. That is the reason why the violations related to these driver actions are included in the violation analyses (Table 1). It should be noted that “no improper driving” action is a crash in which a driver had no improper driving, but was involved in a crash. Therefore, no violation was identified related to this driver action and this driver action was excluded from violation analyses.

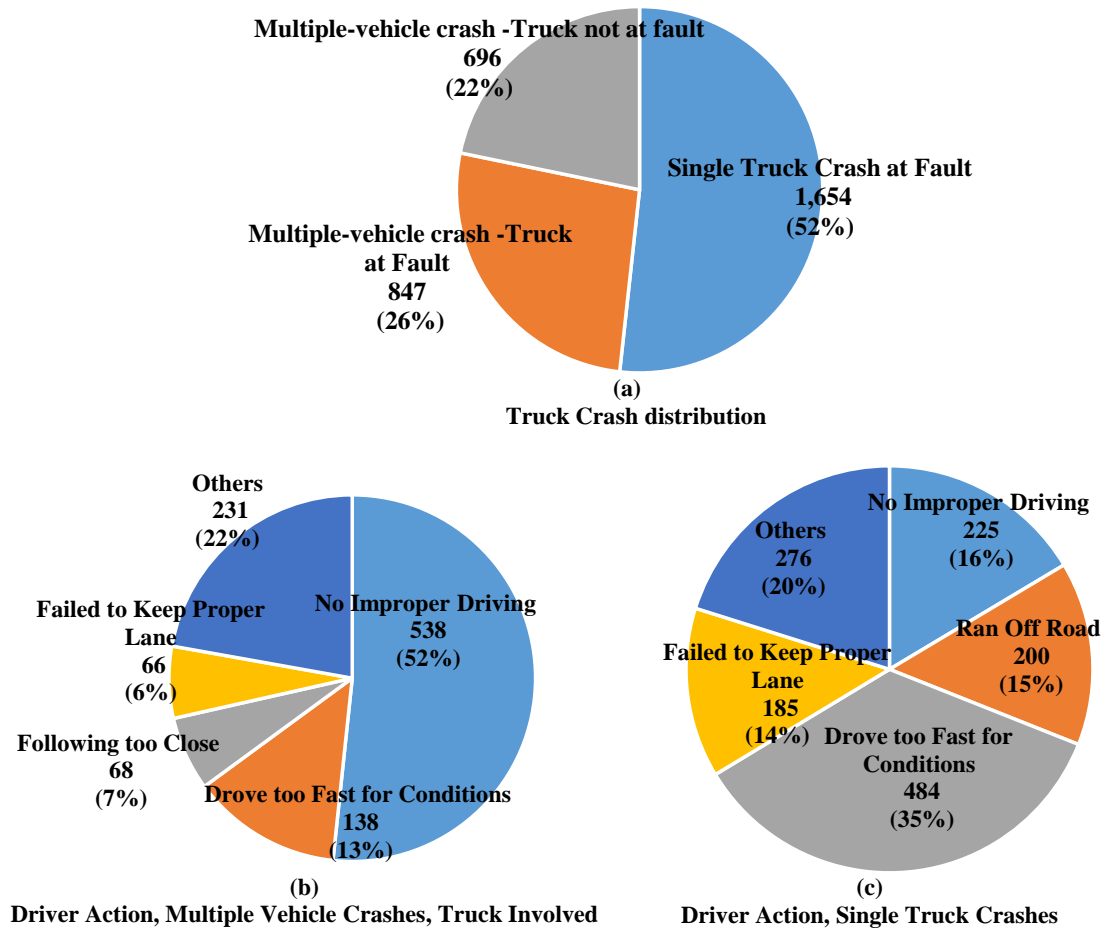


Fig. (1). Different characteristics of truck crashes, 2011-2014.

For the first analysis, data were filtered from the original file to include only single truck crashes. Summary statistics of significant variables that impacted the severity of single truck crashes are presented in Table 2. As can be seen from the table, most of the single truck crashes (85%) involved property damage only. Most of the drivers in single truck crashes were male (94%) compared with only 6% involving female drivers. Speed limit of 65 mi/hr was chosen as a threshold for the speed limit variable. This is because most speed limits on the included highways in Wyoming are greater than 70 mi/hr and 65 mi/hr was found to be the best threshold that can divide the crashes into similar categories. Although the majority of single truck crashes (71%) occurred at a posted speed limit of greater than 65 mi/hr, a rather large proportion (29%) occurred at a lower speed limit. Most of the single truck crashes (67%) occurred on not-dry-road conditions. Most single truck crashes (72%) were rollover or jackknife. In 16% of all the single truck crash cases, truck drivers had some type of distraction in the cabin. Distraction was defined as any distraction in a cabin such as wireless communication or TV.

Table 2. Summary statistics of single and multiple truck crashes, Wyoming Interstates.

Truck crashes			
Variable Name		Number	%
Single Truck Crashes			
Injury single truck crash	Injury truck crash	204	15
	Property damage only	1166	85
Gender	Male	1290	94
	Female	75	6
Posted speed limit	Less than or Equal 65 MI/HR	396	29
	Greater than 65 MI/HR	972	71
Road condition	Dry	450	33
	Not dry	920	67

Truck crashes			
Variable Name		Number	%
Rollover/Jackknife	Rollover/Jackknife	993	72
	Other types	377	28
Driver distraction	Has some Types of Distraction in Cabin	217	16
	There was no distraction	1139	84
Multiple Vehicle Crashes, Truck Involved			
Injury multiple vehicle crash, truck involved	Injury truck crash	85	7
	Property damage only	1,203	93
Speed compliance	Speed limit was followed	1,203	93
	Speed limit was not followed	85	7
Speed Limit was not followed	Dry-road condition	32	38
	Not-dry-road condition	53	62
Posted Speed Limit	Less than or equal 65 mi/hr	365	29
	Greater than 65	895	71
Lower posted speed Limit	Dry-road condition	161	44
	Not-dry-road condition	259	56
Crash characteristic	Truck was at fault of crash	749	58
	Non-truck driver was at fault of the crash	539	42
Temporal characteristics	Business day	808	63
	Weekend	480	37

For the second analysis, the data was filtered from the original file to include crashes involving at least one truck. Due to the involvement of at least two vehicles, only the summary statistics of a vehicle at fault is presented in Table 2. Seven percent of truck crashes occurred while the driver at fault did not follow the posted speed limit. To provide more insight about this variable, Table 2 also includes more statistics on the circumstance in which speed limit compliance was not fulfilled. In these crashes, 62% of the at-fault vehicles did not follow the posted speed limit while driving on not-dry-road conditions. Not-dry-road conditions include the road conditions other than dry, such as rainy/snowy. About 29% of truck crashes occurred at the locations with a speed limit of less than 65 mi/hr. More detailed summary is also provided for this variable in Table 2. The results indicated that most of the lower speed crashes occurred when the road was not dry (56%), which might be an indication that the locations were equipped with Variable Speed Limits (VSL). Forty four percent of the lower speed limits were also related to dry-road condition, which might be due to driving through work zones.

5.2. Statistical Modeling, Crash Data

5.2.1. Factors Associated with Higher Risk of Injury Single Truck Crashes

This first modeling approach investigated the variables that increase the odds of fatal/injury truck crashes compared to PDO truck crashes. Table 3 shows the variables included in the full model and the estimates for those variables remaining in the reduced model at the pre-specified significance levels. Being a male driver decreased the odds of being involved in injury single truck crashes; females are not more likely to be involved in a crash. However, when they are involved in a crash, they are more likely to be injured/killed. The results disagreed with the research carried out by Kim *et al.* (2013) indicating that being a male truck driver increases the odds of F+I single truck crashes [30]. It was found that dry-road conditions increase the odds of being involved in injury single truck crashes. This result is in contrast with the results obtained by Kim *et al.* (2013) indicating that wet or snowy/icy surfaces increased the odds of injury in single-vehicle crashes [31]. However, the difference between single vehicle and single truck crashes should be noted.

The lower odds of injury single truck crashes may lie in the fact that truck drivers drive more cautiously, with lower speed, on not-dry-road conditions. Speed limit is another variable that impacts the severity of single truck crashes on Wyoming interstates. The results indicated that by increasing speed limit, single truck crashes were more likely to be injury/fatality. The results confirmed the research carried out by Abdel-Aty (2000), which indicated that when drivers speed, the odds of being involved in an injury crash increase [32]. Rollover/jackknife was another important variable. The odds of an injury/fatal truck crash were estimated to be nearly 4 times higher if that truck crash involved a rollover/jackknife than if that truck crash did not involve a rollover/jackknife. The result was in accordance with the result found by Krull *et al.* (2000) [33]. It should be noted that this research included only rollover in all types of single

vehicle crashes. Driver distraction was found to increase the odds of getting involved in injury single truck crashes. The result confirmed the research carried out by Bunn (2005), which indicated distraction/inattention increased the odds of a fatal motor vehicle collision [34].

Table 3. Contributory factors to injury single truck crashes, Wyoming Interstates.

Collision Characteristic	Predictors	Odds Ratio	95% CL
Driver characteristics	Gender: Male truck driver (1 if true; 0 otherwise)	0.35*	0.19-0.62
	Age group¹: Younger driver: age <45 years (1 if true; 0 otherwise)	-	-
	violation record¹: Traffic record of one ticket or less (0 if true; 1 otherwise)	-	-
	Residency¹: State of Wyoming (0 if true; 1 otherwise)	-	-
	Speed limit compliance¹: Truck Driver followed Speed Limit(0 if rue, 1 otherwise)	-	-
Environmental characteristics	Weather condition¹: Clear (0 if true; 1 otherwise)	-	-
	Roadway-surface condition: Dry (0 if true; 1 otherwise)	0.19*	0.14-0.27
	Light condition¹: daylight (0 if true; 1 otherwise)	-	-
Vehicle characteristics	CMW weight¹: Truck greater than 26000 pound (1 if true; 0 otherwise)	-	-
Temporal characteristics	Day of week¹: Weekends(1 if true; 0 otherwise)	-	-
	Time¹: Peak hours 6< <22: (0 if true; 1 otherwise)	-	-
	Posted speed limit : Speed limit less than 65 mi/hr(0 if true; 1 otherwise)	1.63*	1.11-2.47
Roadway characteristics	Traffic¹	-	-
Crash characteristics	No of vehicle¹: 1(0 if true; 1 otherwise)	-	-
	Pre-collision vehicle actions¹: Straight-ahead(0 if true; 1 otherwise)	-	-
	Manner of collision ¹	-	-
	Rollover/Jackknife(1 if true; 0 otherwise)	3.62*	2.38-5.52
	Occupant ejection¹: Driver is partially or totally ejected(1 if true; 0 otherwise)	-	-
	No improper driving¹ (1 if true; 0 otherwise)	-	-
	Drove too fast for conditions¹: (1 if true; 0 otherwise)	-	-
	Fail to keep proper lane¹: (1 if true; 0 otherwise)	-	-
Driver behaviors	Driver distraction: No distraction in truck(0 if true; 1 otherwise)	1.72*	1.16-2.60
	DUI suspicion¹: Driver was suspected of driving under the influence condition(1 if true; 0 otherwise)	-	-
	Sign of fatigue¹: Driver was fatigued(1 if true; 0 otherwise)	-	-
	CMV driver safety technology in use¹: Safety equipment was not used (1 if true; 0 otherwise)	-	-

Severity (response): no injury=0, injury or fatality=1

*indicates $p < 0.05$

1 indicates insignificant variable included in the initial model

Table 4 provides possible explanations behind the variables identified in the logistic model for severity of single truck crashes. For instance, the increased odds of being involved in injury/fatal single truck crashes, with distraction in the cabin, may be related to drivers being less attentive to road hazards. Also, a female driver may have higher odds of being involved in injury/fatal single truck crashes since females are less able to sustain different types of physical trauma [35].

Table 4. Significant variables and the possible reasons for the signs, single truck crashes, Wyoming Interstates.

Variable	Relationship	Possible Reason
Female truck driver	It increases the odds of injury/fatal single truck crashes.	Women are less able to sustain physical trauma.
Wet roadway surface condition	It decreases the odds of injury/fatal single truck crashes.	Drive more cautiously, with less speed, on not-dry-road conditions.
Increased posted speed limit	It increases the odds of injury/fatal single truck crashes.	Drive faster in higher posted speed limit locations.
Rollover/Jackknife	It increases the odds of injury/fatal single truck crashes.	Increased the contact of driver with road and vehicle.
Driver distraction	It increases the odds of injury/fatal single truck crashes.	Drivers are less cautious about the hazard associated with Wyoming mountainous area.

5.2.2. Factors Associated with Higher Risk of Injury Multiple Vehicle Crashes, Truck Involved

After learning about contributory factors to injury single truck crashes, an analysis was run to identify contributory factors to injury in multiple vehicle crashes, with involvement of at least one truck. Out of 25 included variables, 3 variables were found to be important at the pre-specified significance level. As can be seen from Table 5, lack of speed limit compliance had the highest estimated impact among the variables in this crash analysis. The odds of this crash were estimated to be 3.34 times higher when the truck driver did not follow the speed limit. Although not much research has been done on the importance of speed compliance in preventing injury truck crashes, many studies showed that increased vehicle speed significantly increased the odds of being involved in fatal/injury crashes [36, 37]. Posted speed limit is another speed variable that increased the odds of being involved in fatal/injury crashes. An increase in injury/fatal crashes was identified during weekends. This impact can be due to a variety of reasons such as less congestion traffic, higher travel speeds, and a desire to reach a destination in a timely manner. The possible reasons for other important variables are presented in Table 6.

As can be noticed from the results presented in Tables 3 and 5, the only common predictor between crash severity for single truck and multiple vehicle, truck involved, crashes related to posted speed limit. Increased posted speed limit increased the crash severity for single truck crashes (1.63) and multiple vehicle crashes (1.85).

Table 5. Contributory factors to injury multiple vehicle crashes, Wyoming Interstates.

Collision Characteristic	Predictors	Odds Ratio	95% CL
Driver characteristics	Gender¹ : Male truck driver (1 if true; 0 otherwise)	-	-
	Age group¹ : Younger driver: age <45 years (1 if true; 0 otherwise)	-	-
	violation record¹ : Traffic record of one ticket or less (0 if true; 1 otherwise)	-	-
	Residency¹ : State of Wyoming (0 if true; 1 otherwise)	-	-
	Speed Limit compliance¹ : Truck Driver followed Speed Limit(0 if true, 1 otherwise)	3.34*	1.75-6.35
Environmental characteristics	Weather condition¹ : Clear (0 if true; 1 otherwise)	-	-
	Roadway-surface condition¹ : Dry (0 if true; 1 otherwise)	-	-
	Light condition¹ : daylight (0 if true; 1 otherwise)	-	-
Vehicle characteristics	CMW weight¹ : Truck greater than 26000 pound (1 if true; 0 otherwise)	-	-
Temporal characteristics	Day of week : Weekends(1 if true; 0 otherwise)	1.70*	1.22-2.36
	Time¹ : Peak hours 6<<22: (0 if true; 1 otherwise)		
	Posted speed limit : Speed limit less than 65(0 if true; 1 otherwise)	1.85*	1.25-2.74
Roadway characteristics	Traffic¹	-	-
Crash characteristics	No of vehicle¹ : 1(0 if true; 1 otherwise)	-	-
	Pre-collision vehicle actions¹ : Straight-ahead(0 if true; 1 otherwise)	-	-
	Manner of collision ¹	-	-
	Rollover/Jackknife ¹ (1 if true; 0 otherwise)	-	-
	Occupant ejection¹ : Driver is partially or totally ejected(1 if true; 0 otherwise)	-	-
	No improper driving¹ (1 if true; 0 otherwise)	-	-
	Drove too fast for conditions¹ : (1 if true; 0 otherwise)	-	-
	Fail to keep proper lane¹ : (1 if true; 0 otherwise)	-	-
Driver behaviors	Driver distraction¹ : No distraction in truck(0 if true; 1 otherwise)	-	-
	DUI suspicion¹ : Driver was suspected of driving under the influence condition(1 if true; 0 otherwise)	-	-
	Sign of fatigue¹ : Driver was fatigued(1 if true; 0 otherwise)	-	-
	CMV driver safety technology in use¹ : Safety equipment was not used (1 if true; 0 otherwise)	-	-

Table 6. Significant variables and the possible reasons for the signs, multiple vehicle crashes, Wyoming Interstates.

Variable	Relationship	Possible Reason
No speed compliance	It increases the odds of getting involved in injury multiple vehicle crashes	Drive faster than recommended speed limit.
Weekend driving	It increases the odds of getting involved in injury multiple vehicle crashes.	Less traffic, higher speeds, or rush to reach a destination.

(Table 6) contd....

Variable	Relationship	Possible Reason
Increased posted speed limit	It increases the odds of getting involved in injury multiple vehicle crashes	Drive faster on increased posted speed limit locations.

5.3. Descriptive Analysis, Violation Data

The literature indicated that previous violations can be used to predict future crashes. Therefore, for a better understanding of the enforcement efficiency, this section aimed to include the most common types of driver violations resulting in truck crashes. The objective of this section was to identify the groups that are more at risk of violating the laws that can result in truck related crashes. Figs. (1b and c) showed the highest proportions of driver actions in truck involved crashes. The figures revealed that driving too fast for conditions (13% for multiple vehicle crashes compared to 35% for single truck crashes), no improper driving (16% for single truck crashes compared to 52% for multiple vehicle crashes), failure to keep proper lane (6% for multiple vehicle crashes compared to 14% for single truck crashes), and following too close (7% of multiple vehicle crashes) accounted for 65% of all the single truck crashes and 78% of multiple vehicle crashes. Therefore, violations related to aforementioned driver actions were included in the violation analyses. No violation was identified for “no improper driving” action as drivers had no improper driving, but were involved in this type of crashes. Therefore, this type of driver action was excluded from the violation analyses.

The summary statistics of significant variables and the summary statistics of the responses are included in Table (7). Violation analyses were divided into two sections: truck related violations and all types of violations. For single truck crashes, only trucks were at fault in the crashes, so only truck violation data were used to identify truck drivers being at higher risk of future crashes. For multiple vehicle crashes, with an involvement of at least one truck, truck and no truck vehicles/drivers could be at fault in the crashes. Therefore, all types of violations were used for investigating the drivers at higher risk of involvement in multiple vehicle crashes, with involvement of at least one truck. Only 12% of all the citations were assigned to trucks. Other types of violation, “others”, included violations such as seat belt, driving under the influence (DUI), and Hour Of Service (HOS) violations. Nonresidents of Wyoming accounted for 70% of all the truck violators and 33% of all the violators. The WHP allocated only 11% of all their resources during off peak hours and most of the violators were male (97%).

Table 7. Summary statistics of violations on Wyoming Interstates, truck violation.

Violation	Number	%
Truck Violation	17,239	12
Non-truck Violation	121,680	88
Truck Related Violations		
Speed too fast for condition	226	1.38
Fail to drive within single lane	755	4.62
Speeding	3,179	19.5
Others	11,800	70.3
Wyoming Resident	2,010	12
Non Wyoming Resident	14,327	88
Weekend	4,423	27
Business days	11,914	73
Peak Hours	14,584	89
Off Peak Hours	1,753	11
Male	15,814	97
Female	482	3
All Violations		
Speed too fast for condition	1,239	0.9
Fail to dive within single lane	2,930	2.1
Speeding	86,984	62.6
Following too Close	1,144	0.8
Others	45,855	33
Weekend	39,568	30
Business days	93,266	70
Peak Hours	124,621	94
Off Peak Hours	8,113	6.1

5.4. Statistical Modeling, Violation Data

5.4.1. Factors Associated with Higher Risk of single Truck Crashes, Risky Truck-Related Violations

This section identified the risk of different truck drivers in violating particular traffic laws, with different driver and temporal characteristics. Only truck related violations were considered in this section as the risk of involvement in single-truck crashes were evaluated. Also, only traffic violation types that are associated with single truck crashes were included in this analysis (Fig. 1b). Therefore, the truck related violations were filtered to include only violations titled: Speed too fast for conditions and failure to drive within single lane. The aforementioned violations, driver actions, accounted for 49% of all single truck crashes, driving too fast for conditions (35%), and failure to drive within single lane (14%). Results of this analysis are presented in Table 8. As can be seen from this table, nonresidents of Wyoming, driving on weekend, and driving in off peak hours, all increased the odds of driving trucks too fast for conditions. These variables, based on the literature, could consequently increase the risk of being involved in single truck crashes. In particular, the odds of violating driving too fast for conditions were estimated to be 2.21 times higher for a nonresident than for a resident of Wyoming.

Except for failure to drive within single lane, all the variables included in the model were found to affect the odds of violating this law. Being female, a nonresident of Wyoming, driving on the weekend, and driving off peak hours all increase the odds of a violation related to failure to keep the proper lane. Being nonresident (2.00) and driving during weekends (2.31) have the highest estimated odds of such a violation.

Table 8. Adjusted odds ratio for driver and temporal characteristics, truck related violation on Wyoming interstates, 2011-2014.

-		Speed Too Fast for Condition	Failure to Drive within Single Lane
Driver characteristics	Driver gender Male truck driver (1 if true; 0 otherwise)	-	0.65*
	Residence group: Non residence(1 if true; 0 otherwise)	2.21*	2.00*
Temporal characteristics	Date: weekends(1 if true; 0 otherwise)	1.97*	2.31*
	Time: peak 6< <22(0 if true; 1 otherwise)	1.55*	1.25*

*indicated $p < 0.05$

-indicates insignificant variable

Table 9. Significant variables and the possible reasons for the signs, single truck violations.

Variable	Relationship	Possible Reason	Possible Reason
Female	Increase the risk of not keeping proper lane.	Have higher score for errors and violations.	Have higher score for errors and violations.
Non residence	Increase the risk of driving too fast for the condition and failing to keep proper lane.	Lack of familiarity with mountainous areas in Wyoming.	Lack of familiarity with mountainous areas in Wyoming.
Weekend	Increase the risk of driving too fast and failing to keep proper lane.	Less traffic and higher speeds.	Less traffic and higher speeds.
Off peak hours	Increase the risks of all these violations.	Possible fatigue.	Possible fatigue.

5.4.2. Factors associated with higher risk of multiple vehicle, truck involved crashes, all types of risky violations

As Fig. (1a) indicated, in 22% of the multiple vehicle crashes, truck involved, non-truck drivers could also be at fault. As a result, all types of violations, truck and no truck violations, were included in this analysis to identify the risk of different drivers, with different temporal and driver characteristics, in violating particular traffic laws. Only traffic violations that are the main causes of multiple vehicle truck crashes were included in this analysis. As descriptive analysis in Fig. (1b) shows, 26% of multiple vehicle crashes were related to driving too fast for conditions (13%), following too close (7%), and failure to keep proper lane (6%). Therefore, only violations related to aforementioned driver actions were included in the violation analysis.

As can be seen from Table 10, being a truck driver increased the odds of violating all of these laws. This is consistent with the results in Fig. (1a) showing that truck drivers are at fault in 78% of all truck related crashes. Contrary to the results obtained from single truck violation analysis, driving on weekends decreased the odds of driving too fast for conditions and failing to drive within single lane violations. The possible reason for the difference between the impact of this variable for this analysis and single truck violation analysis could be related to the fact that in this

analysis about 90% of violators are non- truck drivers. On the other hand, driving off peak hours, similar to the previous analysis, was an indication of increased odds for driving too fast for conditions and failing to keep proper lane.

Table 10. Adjusted odds ratio for driver and temporal characteristics, all types of violation on Wyoming interstates, 2011-2014.

Groups		Drive too Fast for Condition	Failure to Drive within Single Lane	Following too Close
Driver characteristics	Driver gender Male truck driver (0 if true; 1 otherwise)	-	-	-
	Residence group: Non residence(1 if true; 0 otherwise)	-	-	-
Type of vehicle	No truck(0 if true; 1 otherwise)	2.22*	2.85*	2.26*
Temporal characteristics	Date: weekends(1 if true; 0 otherwise)	0.27*	0.60*	-
	Time: peak 6< <22(0 if true; 1 otherwise)	1.67*	3.00*	-

*indicated $p < 0.05$

-indicates insignificant variable.

6. CONCLUSION AND DISCUSSION

Crash data from WYDOT was used to study the impacts of various variables on injury/fatal single truck and multiple vehicle, truck involved crashes. While much research has been done on the contributory factors to both multiple-vehicle and single truck crashes as a whole, this work investigated multiple-vehicle and single truck crashes separately. One of the reasons that single truck crashes were analyzed separately is the importance of this type of crash on Wyoming interstates. As it was shown in this study, more than 50% of all the truck related crashes were related to single truck crashes. This study also just focused on mountainous interstates in Wyoming that have the highest truck crash rates in the state. Moreover, this study included violation data in addition to truck related crash data.

The results indicated that various variables impact single truck and multiple vehicle crashes, with involvement of at least one truck. Being female, driving on dry-road conditions, driving with increased posted speed limits, rollover/jackknife type of truck crashes, and having distraction in the cabin were factors that increased the odds of injury/fatal single truck crashes. As for multiple vehicle crashes, truck involved, different variables impacted this type of crash. Non-speed limit compliance, driving on segments with higher speed limit, and driving during weekends were the factors that increased the odds of getting involved in multiple vehicle crashes leading to fatality or injury. Posted speed limit was a variable that increased the odds of injury/fatal crashes for both analyses.

The literature has indicated that previous violations can be used to predict future offenses and crashes. Therefore, the current study used violation data, in addition to crash data, to examine the groups that are more likely to violate the laws, which account for the majority of driver actions in single truck and multiple vehicle crashes. The violations leading to truck crashes were identified from more than 800 violations and the risk was examined. The results indicated that nonresidents of Wyoming were at higher risk of driving too fast for conditions and failure to drive within single lane. Driving during off peak hours and on weekends also increased the odds of violating these laws.

About 50% of all the multiple vehicle crashes were caused by non-truck drivers. Therefore, both truck and non-truck violations were included in this analysis. Violations related to dominant causes of multiple vehicle crashes were identified and the violation analysis was run only on those violations. The variables included in this analysis were similar to single truck crashes, with the difference that following too close was also added to the contributory factors. Overall, results indicated that being a truck driver plays a dominant role in these types of violations. Truck drivers were more at risk of violating the laws that lead to about 26% of all the causes of multiple vehicle crashes. Driving off peak hours also increased the odds of being involved in violations such as driving too fast for conditions and failing to keep proper lane.

7. RECOMMENDATIONS

Soole *et al.* (2013) reported that enforcement was effective in changing driver behavior resulting in reduced crash rates [39]. Studies also showed that 90% improvement in law compliance can be achieved by enforcement approaches [40]. Therefore, WHP can play an important role in reducing the high truck crash rate in Wyoming by allocating resources in the correct areas.

The following recommendations can be given based on this study:

- Nonresidents of Wyoming were more likely to be involved in risky violations that can result in truck related crashes. Therefore, the WHP should educate the nonresidents about the hazards associated with driving in mountainous areas in Wyoming.
- Distraction in the cabin was another variable that increased the odds of getting involved in injury/fatal single truck crashes. Distracted driving laws need to be toughened.
- Weather and lighting conditions increased the odds of being involved in multiple vehicle crashes. The WYDOT should educate the drivers about the risk of driving on not clear weather and night time conditions by displaying speed related messages on dynamic message signs (DMS).
- Truck drivers were more likely to be involved in driving too fast for condition, failing to keep proper lane, and following too close. Stricter measures should be taken for truck drivers who violate these laws.
- Weekend driving increased the odds of injury crashes for both single and multiple truck crashes. Weekend driving also increased the odds of being involved in risky violations. Only 30% of the WHP resources were dedicated to law enforcement on these days. More activity should take place on these days.

It is recommended for the future studies to incorporate the impact of different active safety systems such as adoptive cruise control, forward collision warning and braking, road sign detection, and night vision in their studies.

CONSENT FOR PUBLICATION

Not applicable.

CONFLICT OF INTEREST

The authors declare no conflict of interest, financial or otherwise.

ACKNOWLEDGEMENTS

The Wyoming Technology Transfer (WYT2/LTAP) center at the University of Wyoming provided extensive resources to assist in the compilation of the data sets used. WYDOT provided the funding of this study. Special acknowledgement goes to WHP and WYDOT for providing the data used in this research.

REFERENCES

- [1] American Trucking Association, *Trucking revenues top \$700 billion for the first time according to new report. 2015.*
- [2] M. Margaret Weber, and W.L. Weber, "Productivity and efficiency in the trucking industry: accounting for traffic fatalities", *Int J. Phys. Distrib. Logist. Manag.*, vol. 34, no. 1, pp. 39-61, 2004. [<http://dx.doi.org/10.1108/09600030410515673>]
- [3] M. Margaret Weber, and W.L. Weber, "Productivity and efficiency in the trucking industry: Accounting for traffic fatalities", *Int J. Phys. Distrib. Logist. Manag.*, vol. 34, no. 1, pp. 39-61, 2004. [<http://dx.doi.org/10.1108/09600030410515673>]
- [4] MD Fagin, "Speed Enforcement", *Insurance institute for highway safety*, 2014.
- [5] M. Margaret Weber, and W.L. Weber, "Productivity and efficiency in the trucking industry: Accounting for traffic fatalities", *Int J. Phys. Distrib. Logist. Manag.*, vol. 34, no. 1, pp. 39-61, 2004. [<http://dx.doi.org/10.1108/09600030410515673>]
- [6] M.M. Mashhadi, S.S. Wulff, and K. Ksaibati, "Utilizing crash and violation data to assess unsafe driving actions", *J. of Sustainable Development of Transport and Logistics.*, vol. 2, no. 2, pp. 35-46, 2017. [<http://dx.doi.org/10.14254/jsdtl.2017.2-2.3>]
- [7] M.M. Rezapour Mashhadi, P. Saha, and K. Ksaibati, "Impact of traffic Enforcement on Traffic Safety", *Int. J. Police Sci. Manag.*, 2017. 1461355717730836.
- [8] A.J. Khattak, R.J. Schneider, and F. Targa, "Risk factors in large truck rollovers and injury severity: Analysis of single-vehicle collisions", *Transp. Res. Rec.*, p. 40, 2003.
- [9] F. Chen, and S. Chen, "Injury severities of truck drivers in single- and multi-vehicle accidents on rural highways", *Accid. Anal. Prev.*, vol. 43, no. 5, pp. 1677-1688, 2011. [<http://dx.doi.org/10.1016/j.aap.2011.03.026>] [PMID: 21658494]
- [10] H. Martensen, and E. Dupont, "Comparing single vehicle and multivehicle fatal road crashes: A joint analysis of road conditions, time variables and driver characteristics", *Accid. Anal. Prev.*, vol. 60, pp. 466-471, 2013.

- [http://dx.doi.org/10.1016/j.aap.2013.03.005] [PMID: 23622842]
- [11] R. Craft, "The Large Truck Crash Causation Study", In: *Analysis Brief: LTCCS Summary*, Publication No: FMCSA-RRA-07.017, 2007.
- [12] J.D. Lemp, K.M. Kockelman, and A. Unnikrishnan, "Analysis of large truck crash severity using heteroskedastic ordered probit models", *Accid. Anal. Prev.*, vol. 43, no. 1, pp. 370-380, 2011.
[http://dx.doi.org/10.1016/j.aap.2010.09.006] [PMID: 21094335]
- [13] M. Moomen, MM. Rezapour Mashhadi, and K. Ksaibati, "An investigation of influential factors of downgrade truck crashes: A logistic regression approach", *J. Traff Transp Eng*, vol. 1, no. 3, pp. 12-22, 2018.
- [14] I.V. Schneider, P. Savolainen, and K. Zimmerman, "Driver injury severity resulting from single-vehicle crashes along horizontal curves on rural two-lane highways", *Transp. Res. Rec.*, no. 2102, pp. 85-92, 2009.
[http://dx.doi.org/10.3141/2102-11]
- [15] X. Zhu, and S. Srinivasan, "A comprehensive analysis of factors influencing the injury severity of large-truck crashes", *Accid. Anal. Prev.*, vol. 43, no. 1, pp. 49-57, 2011.
[http://dx.doi.org/10.1016/j.aap.2010.07.007] [PMID: 21094296]
- [16] J. Pahukula, S. Hernandez, and A. Unnikrishnan, "A time of day analysis of crashes involving large trucks in urban areas", *Accid. Anal. Prev.*, vol. 75, pp. 155-163, 2015.
[http://dx.doi.org/10.1016/j.aap.2014.11.021] [PMID: 25481540]
- [17] W. Zou, X. Wang, and D. Zhang, "Truck crash severity in New York city: An investigation of the spatial and the time of day effects", *Accid. Anal. Prev.*, vol. 99, no. Pt A, pp. 249-261, 2017.
[http://dx.doi.org/10.1016/j.aap.2016.11.024] [PMID: 27984816]
- [18] G. Li, and S.P. Baker, "Prior crash and violation records of pilots in commuter and air taxi crashes: A case-control study", *Aviat. Space Environ. Med.*, vol. 65, no. 11, pp. 979-985, 1994.
[PMID: 7840750]
- [19] M.R. Elliott, P.F. Waller, T.E. Raghunathan, J.T. Shope, and R.J. Little, "Persistence of violation and crash behavior over time", *J. Safety Res.*, vol. 31, no. 4, pp. 229-242, 2001.
[http://dx.doi.org/10.1016/S0022-4375(00)00042-6]
- [20] W. Chen, P. Cooper, and M. Pinili, "Driver accident risk in relation to the penalty point system in British Columbia", *J. Safety Res.*, vol. 26, no. 1, pp. 9-18, 1995.
[http://dx.doi.org/10.1016/0022-4375(94)00023-9]
- [21] B. Lantz, and J. Loftus, "Development and implementation of driver safety history indicator into roadside inspection selection system", *Transp. Res. Rec.*, no. 2006, pp. 121-125, 1969.
- [22] T.T. Terrill, M.M. Mashhadi, and K. Ksaibati, "Developing a tool to help highway patrol in allocating resources to crashes", *Int. J. Police Sci. Manag.*, p. 1461355716665855, 2016.
- [23] M. Abdel-Aty, N. Uddin, A. Pande, F. Abdalla, and L. Hsia, "Predicting freeway crashes from loop detector data by matched case-control logistic regression", *Transp. Res. Rec.*, no. 2004, pp. 88-95, 1897.
- [24] A.S. Al-Ghamdi, "Using logistic regression to estimate the influence of accident factors on accident severity", *Accid. Anal. Prev.*, vol. 34, no. 6, pp. 729-741, 2002.
[http://dx.doi.org/10.1016/S0001-4575(01)00073-2] [PMID: 12371778]
- [25] S. Dissanayake, and J. Lu, "Analysis of severity of young driver crashes: Sequential binary logistic regression modeling", *Transp. Res. Rec.*, no. 2002, pp. 108-114, 1784.
- [26] DS Shinstine, SS Wulff, and K Ksaibati, "Factors associated with crash severity on rural roadways in Wyoming", *J. of traffic and transportation engineering (English edition)*, vol. 3, no. 4, pp. 308-23, 2016.
[http://dx.doi.org/10.1016/j.jtte.2015.12.002]
- [27] M. Moomen, M.M. Rezapour Mashhadi, and K. Ksaibati, "An Investigation of Influential Factors of Truck Crashes on Two-Lane Downgrades in Wyoming: A Logistic Regression Approach", *The 97th Transportation Research Board Annual Meeting*, vol. 18, 2018 05285
- [28] M.H. Kutner, C. Nachtsheim, and J. Neter, Nachtsheim, and J. Neter, *Applied linear regression models.*, McGraw-Hill/Irwin, pp. 1-1415, 2004
- [29] *SAS 9.4 Output Delivery System: User's Guide.*, SAS institute, 2014.
- [30] J.K. Kim, G.F. Ulfarsson, S. Kim, and V.N. Shankar, "Driver-injury severity in single-vehicle crashes in California: A mixed logit analysis of heterogeneity due to age and gender", *Accid. Anal. Prev.*, vol. 50, pp. 1073-1081, 2013.
[http://dx.doi.org/10.1016/j.aap.2012.08.011] [PMID: 22939394]
- [31] J.K. Kim, G.F. Ulfarsson, S. Kim, and V.N. Shankar, "Driver-injury severity in single-vehicle crashes in California: A mixed logit analysis of heterogeneity due to age and gender", *Accid. Anal. Prev.*, vol. 50, pp. 1073-1081, 2013.
[http://dx.doi.org/10.1016/j.aap.2012.08.011] [PMID: 22939394]
- [32] M.A. Abdel-Aty, and A.E. Radwan, "Modeling traffic accident occurrence and involvement", *Accid. Anal. Prev.*, vol. 32, no. 5, pp. 633-642, 2000.
[http://dx.doi.org/10.1016/S0001-4575(99)00094-9] [PMID: 10908135]

- [33] K. Krull, A. Khattak, and F. Council, "Injury effects of rollovers and events sequence in single-vehicle crashes", *Transp. Res. Rec.*, no. 2000, pp. 46-54, 1717.
- [34] T.L. Bunn, S. Slavova, T.W. Struttman, and S.R. Browning, "Sleepiness/fatigue and distraction/inattention as factors for fatal versus nonfatal commercial motor vehicle driver injuries", *Accid. Anal. Prev.*, vol. 37, no. 5, pp. 862-869, 2005. [<http://dx.doi.org/10.1016/j.aap.2005.04.004>] [PMID: 15921653]
- [35] C.J. O'Donnell, and D.H. Connor, "Predicting the severity of motor vehicle accident injuries using models of ordered multiple choice", *Accid. Anal. Prev.*, vol. 28, no. 6, pp. 739-753, 1996. [[http://dx.doi.org/10.1016/S0001-4575\(96\)00050-4](http://dx.doi.org/10.1016/S0001-4575(96)00050-4)] [PMID: 9006642]
- [36] L. Aarts, and I. van Schagen, "Driving speed and the risk of road crashes: A review", *Accid. Anal. Prev.*, vol. 38, no. 2, pp. 215-224, 2006. [<http://dx.doi.org/10.1016/j.aap.2005.07.004>] [PMID: 16256932]
- [37] D Lynam, and T Hummel, *The effect of speed on road deaths and injuries: Literature review. The Administration; 2002.*
- [38] A. Dobson, W. Brown, J. Ball, J. Powers, and M. McFadden, "Women drivers' behaviour, socio-demographic characteristics and accidents", *Accid. Anal. Prev.*, vol. 31, no. 5, pp. 525-535, 1999. [[http://dx.doi.org/10.1016/S0001-4575\(99\)00009-3](http://dx.doi.org/10.1016/S0001-4575(99)00009-3)] [PMID: 10440550]
- [39] D.W. Soole, B.C. Watson, and J.J. Fleiter, "Effects of average speed enforcement on speed compliance and crashes: A review of the literature", *Accid. Anal. Prev.*, vol. 54, pp. 46-56, 2013. [<http://dx.doi.org/10.1016/j.aap.2013.01.018>] [PMID: 23474237]
- [40] A Gains, M Nordstrom, B Heydecker, and J Shrewsbury, *The national safety camera programme: Four-year evaluation report. 2005.*

© 2018 Mashhadi et al.

This is an open access article distributed under the terms of the Creative Commons Attribution 4.0 International Public License (CC-BY 4.0), a copy of which is available at: <https://creativecommons.org/licenses/by/4.0/legalcode>. This license permits unrestricted use, distribution, and reproduction in any medium, provided the original author and source are credited.