



## The Open Orthopaedics Journal Supplementary Material

Content list available at: <https://openorthopaedicsjournal.com>



### Modular *Xgtuwu* Monoblock Hemiarthroplasty in Trauma: A 5-Year Retrospective Analysis of Radiographic and Clinical Outcomes

Heng Kan<sup>1,\*</sup>, Andrew McBride<sup>1</sup>, Andrew McLean<sup>1</sup>, William B. O'Callaghan<sup>1</sup>, Hussain Ijaz Khan<sup>2</sup> and Price Gallie<sup>1,3</sup>

<sup>1</sup>Orthopaedic Department, Gold Coast University Hospital, Block A, Level 6, 1 Hospital Boulevard, Southport, Queensland, 4215, Australia

<sup>2</sup>Menzies Research Centre Tasmania, 17 Liverpool St, Hobart, Tasmania, 7000, Australia

<sup>3</sup>Menzies Research Centre Queensland, G40 Griffith Health Centre, Level 8.86, Gold Coast campus, Griffith University, Queensland, 4222, Australia

#### Article History

Received: March 02, 2018

Revised: November 07, 2018

Accepted: November 29, 2018

#### SUPPLEMENTARY FIGURES AND TABLES

#### Bland-Altman plot of Inter-rater Operated.Leg.Length

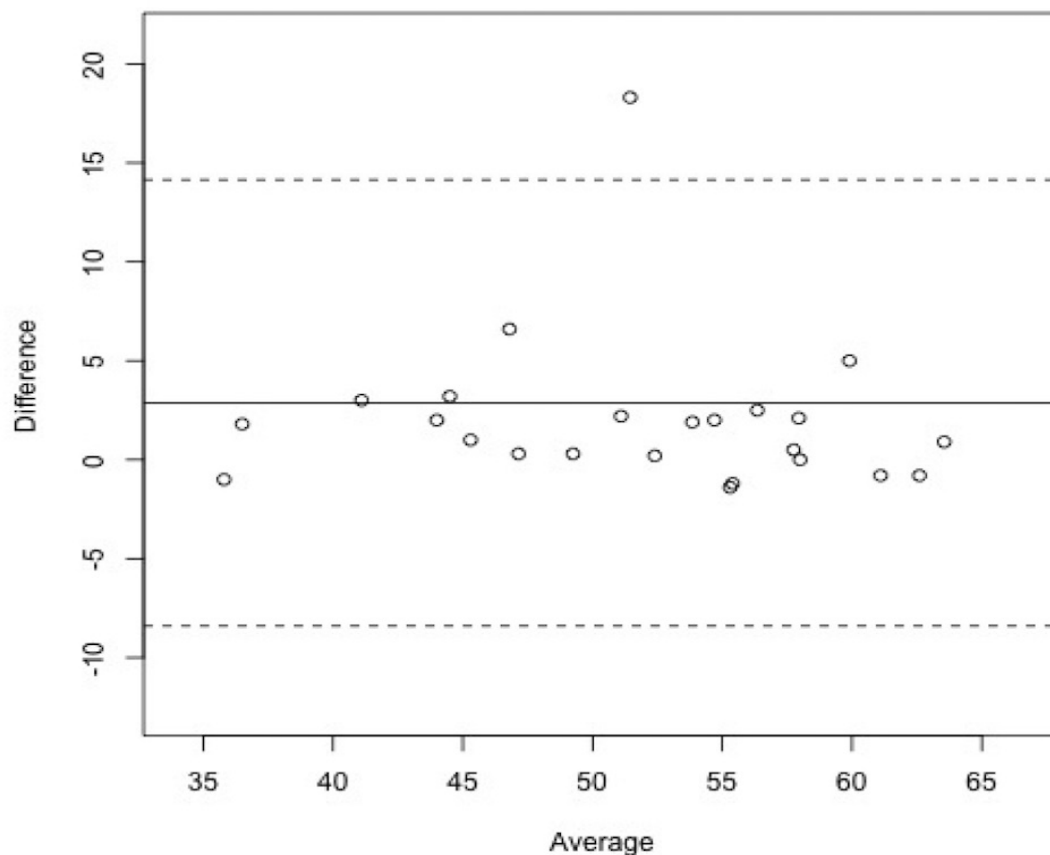
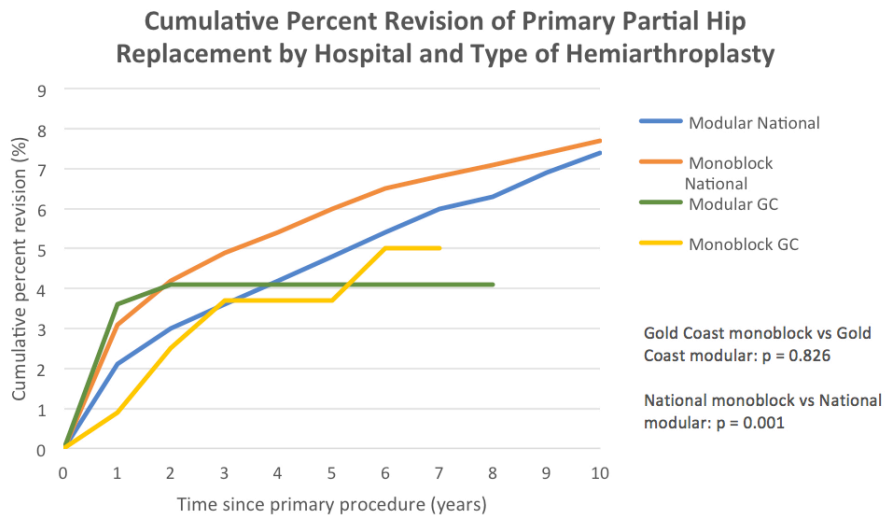


Fig. (S1). Bland-Altman Plot for inter-rater correlation for 'operated leg length'.



**Fig. (S2).** Revision rates by hemiarthroplasty implant type in the Gold Coast University Hospital (Adapted from AOANJRR).

**Table S1. Pre-morbid mobility levels.**

Pre-morbid mobility	Implant type	
	Monoblock	Modular
Independent	43.7% (52/119)	56.3% (67/119)
Single-pointed stick	50% (15/30)	50% (15/30)
Walker/hopper	75% (72/96)	25%(72/96)
Bed/wheelchair bound	57.1% (8/14)	42.9% (6/14)

**Table S2. Intraclass correlations for inter- and intra-rater reliability.**

Measurement	Inter-rater reliability	Reproducibility
Operated leg length	0.708 (0.446, 0.859)	0.988 (0.974, 0.995)
Contralateral leg length	0.831 (0.656, 0.921)	0.986 (0.969, 0.994)
Operated FO	0.913 (0.814, 0.960)	0.913 (0.815, 0.961)
Contralateral FO	0.810 (0.619, 0.911)	0.906 (0.801, 0.957)

FO, femoral offset

**Table S3. Primary operator experience within each implant group.**

Operator experience	Implant type	
	Modular	Monoblock
Consultant	29.5% (33/112)	31.6% (45/142)
Training registrar	58.9% (66/112)	54.9% (78/142)
Unaccredited registrar /principal house officer	12.5% (14/112)	13.3% (19/142)
Total	100%	100%

P= 0.83 between implant groups